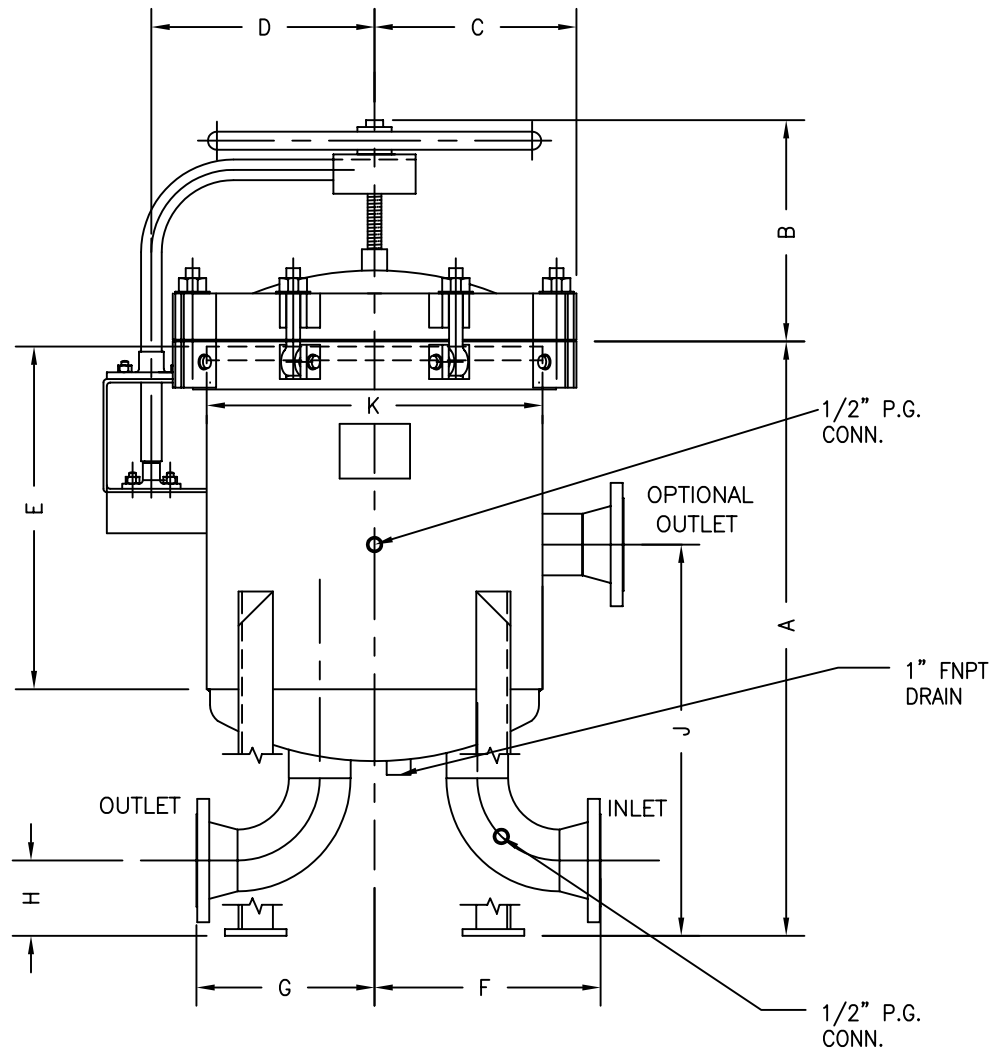


MANUREP SALES INC.

FS - 1260 - 7 BAG



STD.

FITTING SIZE	A	B	1/2"	D	E	F	G	H	J	K
6" FLG	51"	18 1/4"	18 3/4"	19 1/4"	28"	15"	21"	6 1/2"	33 1/4"	30"
8" FLG	58"	18 1/4"	18 3/4"	19 1/4"	28"	18 1/2"	24 1/2"	7 3/4"	33 1/4"	30"

SHIPPING WEIGHT	1300 lbs.
VOLUME	120 US. gal.
DESIGN PRESSURE	150 psig. @ 225 F

ALL STATEMENTS, TECHNICAL INFORMATION, AND DIMENSIONS IN THIS BULLETIN ARE FOR GENERAL USE ONLY.