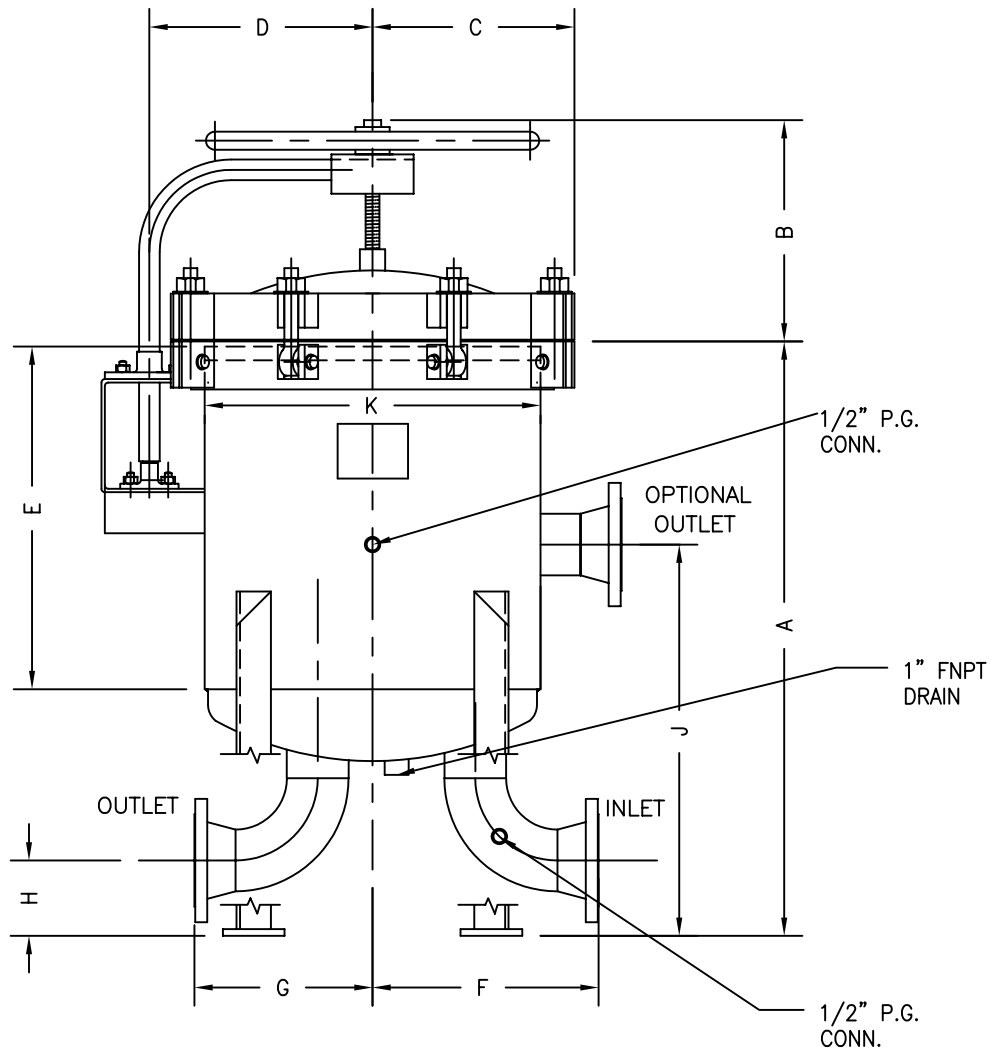


# MANUREP SALES INC.

FS - 1080 - 6 BAG



STD.

FITTING SIZE	A	B	C	D	E	F	G	H	J	K
4" FLG	44 1/4"	15 5/8"	15 7/8"	16"	25"	16 1/2"	13"	5 1/2"	29 3/4"	24"
6" FLG	48"	15 5/8"	15 7/8"	16"	25"	20"	16 1/2"	6 1/2"	33 3/4"	24"

SHIPPING WEIGHT	650 lbs
VOLUME	75 US. gal.
DESIGN PRESSURE	150 psig. @ 225 F

ALL STATEMENTS, TECHNICAL INFORMATION, AND DIMENSIONS IN THIS BULLETIN ARE FOR GENERAL USE ONLY.